

Signal Conditioning Amplifier System



FEATURES

- Strain gage, transducer, and thermocouple inputs
- Frequency response to 110kHz
- Analog output of $\pm 10\text{VDC}$
- Operation with 12 to 15VDC and 120/240Vac power
- Scalable from 8 to 128 channels in high-density enclosures
- Digital control from both front panel and PC over Ethernet
- Remote channel-by-channel monitoring of signals by Ethernet

DESCRIPTION

The A2 is an analog signal conditioner and amplifier system for strain gages, strain-gage-based transducers, thermocouples and various other sensors with high-level signals. Scalable in multiples of eight channels to a maximum of 128 for each system, the A2 features digital control of the system instrumentation and monitoring of the analog outputs, both locally on the control panel and remotely by Ethernet from a PC. The Model A2 is an embedded web server. All system, card, and channel settings are accessible using simple HTTP (hypertext transfer protocol) commands or by using the graphical user interface provided by the system. Ordinary web browsers, such as Internet Explorer, can be used to control the system. The A2 is specially designed to function as the

front-end for DAQ's and recorders accepting high-level analog signals.

Instrumentation hardware, available as individual eight-channel cards for strain gage, thermocouples, and high-level signals, features high stability with temperature and time. Strain-gage instrumentation accepts full-, half-, and quarter-bridge circuits and has built-in bridge completion resistors for 120-, 350- and 1000-ohm quarter bridges. Amplifiers gain; bridge excitation and balance; shunt calibration; and signal filtering are digitally controlled. Instrument design enables sensors to remain connected when cards are removed from the system for bridge configuration.

SPECIFICATIONS

General

All specifications are nominal or typical at +23°C unless noted. Performance may be degraded in the presence of high-level electromagnetic fields.

System Configuration

Each system consists of a Model A2-MC-8 Controller and at least one 8-channel instrumentation card. Stackable expansion cabinets are added when two or more instrumentation cards are used.

Physical Dimensions:

Eight Channel Enclosure with Controller:
 17" W x 12" D x 8.5" H [43.2cm W x 30.5cm D x 21.6cm H]
 40 Channel Enclosure with Controller:
 17" W x 12" D x 17.5" H [43.2cm W x 30.5cm D x 44.6cm H]
 72 Channel Enclosure with Controller:
 17" W x 12" D x 26.5" H [43.2cm W x 30.5cm D x 67.3cm H]
 104 Channel Enclosure with Controller:
 17" W x 12" D x 35.5" H [43.2cm W x 30.5cm D x 90.2cm H]
 128 Channel Enclosure with Controller:
 17" W x 12" D x 44.5" H [43.2cm W x 30.5cm D x 113.0cm H].

Input Power:

115 or 230VAC with optional external "line lump" power supply (15VDC output). Will also work from a 12V battery with reduced specifications.



Controller with Model A2-EC Expansion Cabinets

Signal Conditioning Amplifier System



MODEL A2-MC-8 CONTROLLER

Supports hardware identification, setup and output data monitoring of each type of plug-in card via a local keyboard interface or remotely via an Ethernet Interface. Each controller supports 8 channels of signal conditioning and up to 128 channels of signal conditioning when expansion cabinets are added.

Front Panel User Interface:

Membrane keypad with illuminated 128 x 64 pixel FSTN positive, gray transfective LCD.

Communication Interface:

Physical: 10/100 Base-T

Protocol: HTTP

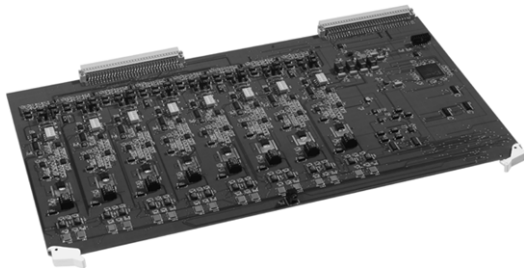
IP Addressing: Static. Configurable by the front panel controls

Size:

17" W X 12" D X 8.5"H [43.2cm W x 30.5cm D x 21.6cm H]

Weight:

12.6lbs [5.7kg]



MODEL A2-SG-8-BX STRAIN GAGE CARD

(Specify **Model A2-SG-8-BW** (with Butterworth filter characteristics) or **Model A2-SG-8-BS** (with Bessel filter characteristics).

These specifications apply for each of eight independent channels of signal conditioning per removable card.

Amp Input:

Inputs:

Quarter (120 ohms, 350 ohms, and 1000 ohms), half and full bridge (50-1000 ohms).

Bridge completion resistors are provided for quarter-bridge circuits.

Input Impedance:

>100 MΩ

Source Current:

±5nA typical; ±10nA max.

Amplifier:

Zero Temperature Stability:

±1.7μV/°C RTI*, ±100μV/°C RTO*, after 30-minute warm-up.

Input Range:

4 to 80mV full-scale input range (x2500 to x125) - adjustable by software control per channel.

Output Range:

±10V into 600Ω minimum load (When powered from 15VDC)

DC Gain Accuracy & Stability:

±0.10%; ±50ppm/°C

Common-Mode Rejection (DC to 100Hz):

105dB typical

Common-Mode Voltage:

±10V typical

Bandpass:

Full Power Frequency response DC to 110kHz; -3dB. (Wideband operation)
Slew Rate: 7V/μs

Dynamic Characteristics:

Noise RTI:

1μV p-p at 0.1Hz to 10Hz;
6μV RMS at 0.1Hz to 110kHz.

Total Harmonic Distortion:

0.014% at 1kHz

Filter:

Type:

Software settable 5th order filter - DC to 40kHz max: -3dB. (Butterworth or Bessel characteristics)

Settings:

Wideband, 40kHz, 20kHz, 10kHz, 5kHz, 1kHz, 100Hz, and 10Hz Software-programmable per channel.

Bridge Excitation:

Type:

Constant voltage

Settings:

0.0, 0.5, 1.0, 1.5, 2.0, 2.5, 3.0, 3.5, 4.0, 4.5, 5.0, 5.5, 6.0, 6.5, 7.0, 7.5, 8.0, 8.5, 9.0, 9.5 and 10.0VDC.

Software-programmable per channel.

Accuracy:

±3mV typical

Signal Conditioning Amplifier System

Current:

50mA max. Over-current protected.

Load Regulation:

<0.05% of full scale for a load variation of 10% to 100% of full load.

Temperature Stability:

Better than $\pm 0.005\%/^{\circ}\text{C}$

Bridge Balance:

99% of measurement range

Calibration:

Standard factory-installed resistors ($\pm 0.1\%$) simulate 5000 microstrain at GF=2 for 120, 350 and 1000 ohm quarter bridge.

8 Channel Strain Gage Card Size:

15.13 inch W x 9 inch D [38.4cm W x 22.9cm D]

8 Channel Strain Gage Card Weight:

0.80lbs [0.36kg]

MODEL A2-TC-8-BX THERMOCOUPLE CARD

(Specify **Model A2-TC-8-BW** (with Butterworth filter characteristics) or **Model A2-TC-8-BS** (with Bessel filter characteristics)).

These specifications apply for each of eight independent channels of signal conditioning per removable card.

Amp Input:**Inputs:**

Thermocouple types J, K, T, E, N, R, S, B. Built-in electronic cold-junction compensation. Software-selectable.

Input Impedance:

10M Ω differential, 100K Ω common mode

Source Current:

$\pm 5\text{nA}$ typical; $\pm 10\text{nA}$ max.

Amplifier:**Zero Temperature Stability:**

$\pm 1.7\ \mu\text{V}/^{\circ}\text{C}$ RTI*, $\pm 100\ \mu\text{V}/^{\circ}\text{C}$ RTO**, after 30-minute warm-up.

Input Range:

4 to 80mV full-scale input range (X2500 to X125) - adjustable by software control per channel.

Output Range:

$\pm 10\text{V}$ into 600 Ω minimum load (when powered from 15VDC)

DC Gain Accuracy & Stability:

$\pm 0.05\%$; $\pm 50\text{ppm}/^{\circ}\text{C}$

Common-Mode Rejection (dc to 100Hz):

105dB typical

Common-Mode Voltage:

$\pm 10\text{V}$ typical

Bandpass:

Full Power Frequency response DC to 110kHz; -3dB. (Filter not selected)
Slew Rate: 7V/ μs

Dynamic Characteristics:**Noise RTI:**

1 μV p-p at 0.1Hz to 10Hz;
6 μV rms at 0.1Hz to 110kHz.

Total Harmonic Distortion:

0.014% at 1kHz

Filter:**Type:**

Software settable 5th order filter - DC to 40kHz: -3dB. (Butterworth or Bessel characteristics)

Settings:

Wideband, 40kHz, 20kHz, 10kHz, 5kHz, 1kHz, 100Hz, and 10Hz Software-programmable per channel.

8 Channel Thermocouple Card Size:

15.13 inch W x 9 inch D [38.4cm W x 22.9cm D]

8 Channel Thermocouple Card Weight:

0.80lbs [0.36kg]

MODEL A2-HL-8-BX HIGH LEVEL CARD

(Specify **Model A2-HL-8-BW** (with Butterworth filter characteristics) or **Model A2-HL-8-BS** (with Bessel filter characteristics)).

These specifications apply for each of eight independent channels of signal conditioning per removable card.

Amp Input:**Inputs:**

DC voltage (differential)

Input Impedance:

>100M Ω

Source Current:

$\pm 5\text{nA}$ typical; $\pm 10\text{nA}$ max.

Amplifier:**Zero Temperature Stability:**

$\pm 1.7\ \mu\text{V}/^{\circ}\text{C}$ RTI*, $\pm 100\ \mu\text{V}/^{\circ}\text{C}$ RTO**, after 30-minute warm-up.

Input Range:

1 to 10V full-scale input range - adjustable by software control per channel.

Signal Conditioning Amplifier System

Output Range:

±10V into 600Ω minimum load (when powered from 15Vdc).

DC Gain Accuracy & Stability:

±0.10%; ±50ppm/°C

Common-Mode Rejection (dc to 100 Hz):

105dB typical

Common-Mode Voltage:

±10V typical

Bandpass:

Full Power Frequency response DC to 110kHz; -3dB.
(Filter not selected)
Slew Rate: 7V/μs

Dynamic Characteristics:

Total Harmonic Distortion:

0.014% at 1Khz

Filter:

Type:

Software settable 5th Order filter - DC to 40kHz max: -3dB. (Butterworth or Bessel characteristics)

Settings:

Wideband, 40kHz, 20kHz, 10kHz, 5kHz, 1kHz, 100Hz, and 10Hz Software-programmable per channel.

Bridge Excitation:

Type:

Constant voltage

Settings:

0.0, 0.5, 1.0, 1.5, 2.0, 2.5, 3.0, 3.5, 4.0, 4.5, 5.0, 5.5, 6.0, 6.5, 7.0, 7.5, 8.0, 8.5, 9.0, 9.5 and 10.0Vdc. Software-programmable per channel.

Accuracy:

±3mV typical

Current:

50mA max. Over-current protected.

Load Regulation:

<0.05% of full scale for a load variation of 10% to 100% of full load

Temperature Stability:

Better than ±0.005%/°C

8 Channel High Level Card Size:

15.13 inch W x 9 inch D [38.4cm W x 22.9cm D]

8 Channel High Level Card Weight:

0.80lbs [0.36kg]

*Referred to input **Referred to output

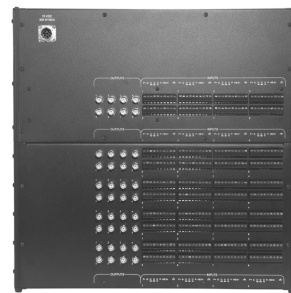
MODEL A2-EC-X EXPANSION CABINET

(Specify **Model A2-EC-8** (supports one addition instrumentation card) or **Model A2-EC-16** (supports two addition instrumentation cards) or **Model A2-EC-32** (supports four addition instrumentation cards).

Front View



Back View



Controller with Model A2-EC Expansion Cabinet

Stackable expansion cabinets are added when two or more instrumentation cards are used. Up to 16 instrumentation cards (128 channels) can be used with one Model A2-MC Master Controller. Control and power are routed via the Model A2-MC-8 Controller.

Expansion Cabinets Size:

Model A2-EC-8 Expansion Cabinet:

17" W X 12" D X 3.0" H [43.2cm W x 30.5cm D x 7.6cm H]

Model A2-EC-16 Expansion Cabinet:

17" W X 12" D X 5.0" H [43.2cm W x 30.5cm D x 12.7cm H]

Model A2-EC-32 Expansion Cabinet:

17" W X 12" D X 9.5" H [43.2cm W x 30.5cm D x 24.1cm H]

Expansion Cabinets Weight:

Model A2-EC-8 Expansion Cabinet 4.5lbs [2.04kg]

Model A2-EC-16 Expansion Cabinet 6.8lbs [3.08kg]

Model A2-EC-32 Expansion Cabinet 12.0lbs [5.44kg]

MODEL A2 CONTROL AND MONITORING SOFTWARE

Recommended Browser (User Supplied): Internet Explorer version 6 or later, running under a Windows operating system (98, NT 4, 2000, or XP). A PC with Intel Pentium class, or better, processor (450 MHz or higher), 64MB RAM and a 100 Base-T Ethernet interface is recommended.

Disclaimer

All product specifications and data are subject to change without notice.

Vishay Precision Group, Inc., its affiliates, agents, and employees, and all persons acting on its or their behalf (collectively, "Vishay Precision Group"), disclaim any and all liability for any errors, inaccuracies or incompleteness contained herein or in any other disclosure relating to any product.

Vishay Precision Group disclaims any and all liability arising out of the use or application of any product described herein or of any information provided herein to the maximum extent permitted by law. The product specifications do not expand or otherwise modify Vishay Precision Group's terms and conditions of purchase, including but not limited to the warranty expressed therein, which apply to these products.

No license, express or implied, by estoppel or otherwise, to any intellectual property rights is granted by this document or by any conduct of Vishay Precision Group.

The products shown herein are not designed for use in medical, life-saving, or life-sustaining applications unless otherwise expressly indicated. Customers using or selling Vishay Precision Group products not expressly indicated for use in such applications do so entirely at their own risk and agree to fully indemnify Vishay Precision Group for any damages arising or resulting from such use or sale. Please contact authorized Vishay Precision Group personnel to obtain written terms and conditions regarding products designed for such applications.

Product names and markings noted herein may be trademarks of their respective owners.